

2022 Provincial election

Vote in the advance poll on September 25 and 26, from 9:30 a.m. to 8 p.m.

Check the address of your advance polling place on the notice of entry sent by mail or on our website, at www.elections.quebec/where-when.

To vote

- You must be registered on the list of electors
- You must have one of the following pieces of identification with you:
 - Québec driver's licence
 - Health insurance card
 - Canadian passport
 - Indian status card
 - Canadian Forces identification card

Experience democracy as a family!

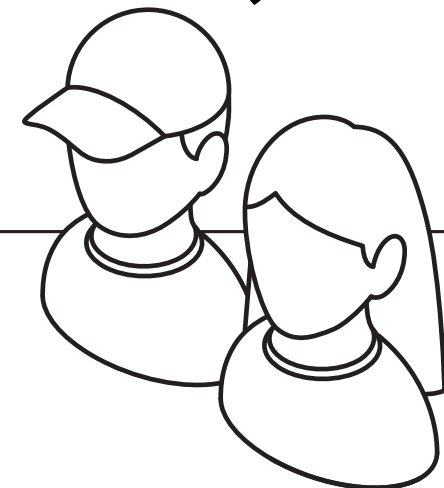
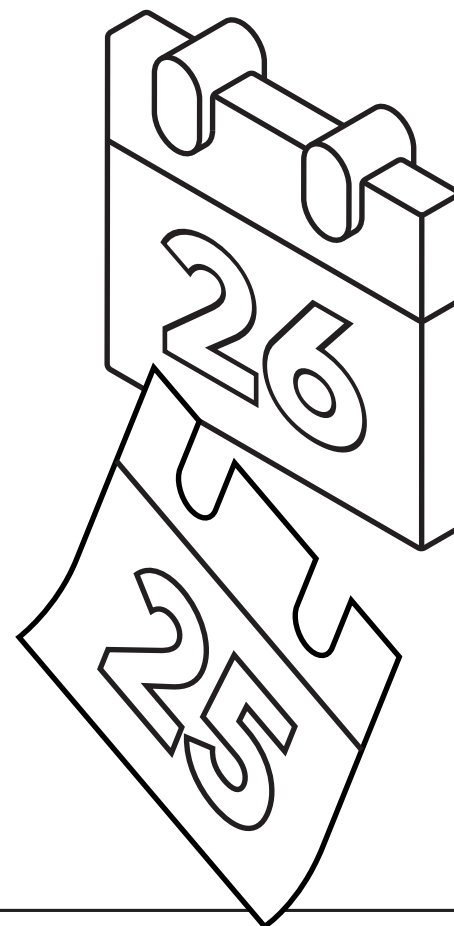
Do you have young children? Introduce them to democracy by taking them to the small polling stations. Set up in each polling place, the small polling stations allow children to answer a question created just for them. Discover this question at www.elections.quebec/smallpolling.

For more information

- Visit our website, at www.elections.quebec/en
- Contact us:
 - by phone: **1-888-ELECTION** (1-888-353-2846)
 - by e-mail: info@electionsquebec.qc.ca
 - by SMS: **868372** (VOTEQC) (standard fees apply)



All advance polling places are accessible. To learn more about the accessibility criteria for each place, visit www.elections.quebec/where-when.



**This year, let's reverse the trend.
Let's all vote.**

 **élections
Québec**

sept
ième

septième production	2110, rue Drummond, 3 ^e étage Montréal (Québec) H3G 1X1	septembre 12, 2022 3:56 PM
client :	DGEQ N° 111179925-1	format PAP : 100 % @ 300 dpi
description :	Élections générales 2022	trim fermé : 10,34" x 10,214"
pièce :	Quotidien - EN	trim ouvert : —
version :	Anticipation	visible : —
infographiste :	Nataly	bleed : —
nom fichier :	79925-1_EQ_Quotidien_DemiPage_10.34x10.214_Anticipation_EN	
couleur	C M J N	Check List
Les sorties laser ne reflètent pas fidèlement les couleurs telles qu'elles paraîtront sur le produit fini. Cette épreuve est utilisée à des fins de mise en page seulement		